



#LIVECOCKY

You may cross Pelham Street



HOUSING OPERATIONS
& RESIDENCE LIFE
JACKSONVILLE STATE UNIVERSITY

Dear Resident,

Congratulations on finding your way to the “Friendliest Campus in the South!” We along with our staff are busy preparing for your arrival and can’t wait to welcome you HOME.

Living on campus provides endless opportunities for getting involved, having fun, and making friends. Our on-campus community is centered around supporting your personal growth and academic success as a JSU Gamecock. It is our mission to continue fostering a vibrant living and learning community that cultivates personal development, celebrates diversity, promotes leadership, and enhances the educational experience of each resident.

This guide was designed to help you settle into your new home. As you prepare for the big move, familiarize yourself with our facilities, policies, and move-in procedures. Spend some time thinking about how you will customize your space for comfort and success.

We wish you the very best as you begin your collegiate career and look forward to having you as a positive and productive citizen of the JSU Housing community. Go Gamecocks and #LiveCocky!



B. Lyon

Brooke Lyon
Director of Housing Operations



R. Smith

Rochelle Smith
Director of Residence Life

17 august

9a.m.-3p.m.

Move-in day is a busy and exciting time for both students and families! New students should take the following steps for a successful move in:

- Report to your assigned residence hall and check in at the front desk with your student ID.
- Sign the roster and receive your key.
- Unload and begin the move-in process.

Parking and unloading space will be limited. Trailers and oversized vehicles are not recommended and may require parking further from the hall.

Claim your assigned space by 3:00 p.m. on August 17, 2019 to avoid losing it. Email us with questions or concerns at jsuhousing@jsu.edu.

Tuition and fees, for JSU housing residents, must be paid by August 17, 2019. Having financial aid and/or other payment options prior to move in will ensure a better transition into housing. If you have questions or concerns about your student account, please contact the Office of Student Accounts at (256) 782-5458 or visit www.jsu.edu/bursar/.

Housing charges will be assessed to student accounts on July 1, 2019. Please see our website, <http://www.jsu.edu/housing/reslife.html>, to calculate what you will owe for housing charges for the fall 2019 semester.



PACKING checklist

Your assigned on-campus space is your home away from home. We encourage you to make it your own by filling it not only with necessities, but also with personal items to add comfort and style. Appropriate decorations are allowed and encouraged! Check out our Pinterest profile for decorating ideas at www.pinterest.com/jsuhousing.

To prevent having duplicate items on move-in day, we recommend contacting your roommate ahead of time to discuss what each of you plan to bring. Visit www.jsu.edu/housing for a packing checklist.

Before YOU arrive

HOW BIG is your BED?

Crow, Curtiss, Daugette, Dixon, Fitzpatrick, Logan, Meehan, Patterson, Pannell, and Sparkman Halls are equipped with twin beds. Both standard and XL twin bedding are compatible. Full-sized beds are featured in all of our JSU-owned Apartment Complexes as well as the Leadership House for Women, Kappa Sigma, and Pi Kappa Phi Fraternity Houses, and The Pointe @ JSU. Bed risers are not permitted but bedframes can be adjusted for extra space.

RENTERS insurance

We encourage residents to obtain renters insurance for their personal property. Neither JSU nor University Housing Operations provide renters insurance or assumes responsibility for property that is damaged, lost, or stolen. The resident is responsible for obtaining insurance through a company of their choice.



IN your RESIDENCE hall

Front Desk: Each residence hall features a front desk where helpful services are provided. Staff members welcome guests, answer questions, and help ensure residents' safety. At the front desk, residents can offer suggestions, register concerns, learn how to submit a work order, inquire about upcoming events, and more. Get to know your Resident Assistant and know that they are there to help.

Laundry Facilities: Laundry facilities are provided for your convenience in each of the residence halls and some apartments. Laundry costs are included in your residential rate. All you'll need to bring is detergent and other laundry essentials. You can even view your laundry room from your smart phone at www.laundryview.com/jsu to see machine availability. Visit our website for more laundry tips.

Mail Services: Students may request a JSU mailbox at no cost by visiting the service window of the JSU Mail Center. For more information regarding mail services, visit www.jsu.edu/mailcenter or call 256-782-5290.

Safety and Security: All entrance doors are secured with card readers and cameras. Your student identification card and pin code will allow access into your assigned residence hall. Please keep your hall secure by meeting your guests at the door and not allowing others to follow you inside upon entering. Remember to lock the door to your room every time you leave to avoid becoming a victim of theft.

WiFi: All residence halls and apartments are equipped with wireless internet. WiFi is available across campus to all students. All residence halls have computer rooms with internet access. For questions regarding connectivity visit www.jsu.edu/it/services/network/housing.html to submit a work order.

Vehicles/Parking: We do allow first-year students to have cars on campus. Your parking zone/decal color is determined by where you live. For more information on parking and to register for your decal, visit www.jsu.edu/police/parkingregistration.html or contact Parking Services at 256-782-5566.





your ROOMMATE

Whether your roommate is already an acquaintance or someone you just met, it is important to communicate effectively and learn to problem-solve early on. Use FIND as a method for communicating and getting to know your roommate:

Family – Talking about those you know and love best makes for a great starter topic when getting to know your roommate.

Interests – Share your hobbies and passions from the start. You may find that you have more in common than you think!

Negotiables – Discuss your biggest pet-peeves and determine each of your negotiables/non-negotiables to avoid potential conflict.

Destiny – Share what each of you hope to accomplish at JSU and in life. Discuss your majors, classes, and future. Strive to support one another in accomplishing your goals!

We hope you **FIND** a lifelong friend in your roommate!

Room changes cannot be considered until move in has been completed for each semester. You can obtain a Room Change Request form for room and roommate changes online through MyResCenter, our online housing portal. Requests will be processed the third full week of classes of each semester and are granted based on availability. Check with your Residence Life Coordinator or Resident Assistant for more information.

IMPORTANT *dates*

8/17: Move-In Day

9:00 a.m. - 3:00 p.m.

8/17: Block Party

Dillon Field, 6:00 p.m. - 9:00 p.m.

8/18: "After the Fire"

Leone Cole Auditorium, 7:00 p.m.

*mandatory for all first-year residents of on-campus housing.

8/20: Freshmen Convocation

JSU Stadium, 6:30 p.m.

8/21: First Day of Classes

8/22: Spirit on Mountain Street

If you are part of an organization or athletic team that requires an early move-in, visit www.jsu.edu/housing for your move-in date/time.

PARENTS *+ families*



JSU Housing Parents

+ Join

Group · 354 members · 9 posts a week

An open forum for parents of our Jacksonville State University Housing residents. We welcome questions, comments, and...

🎓 14 members said they went to Jacksonville State University

Once your student is moved in and settled, you can still help them keep track of important deadlines and information throughout the year by being a member of our "JSU Housing Parents" Facebook group. Students who want to live on campus again next year will need to submit a Returning Student Application in March 2020. More information on this process and others will be available on our website and the Parents Facebook group throughout the academic year.

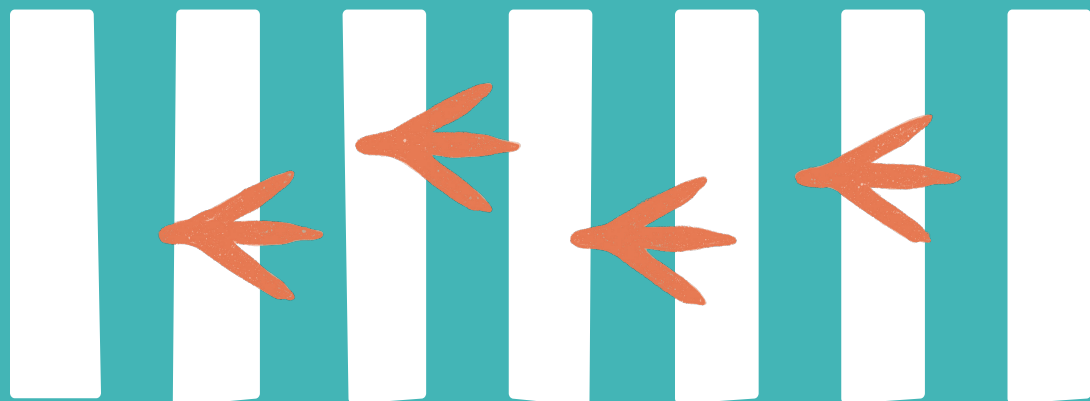


MAY YOUR JOURNEY
ALWAYS LEAD YOU

home



@jsuhousing



256-782-5122

jsu.edu/housing

jsuhousing@jsu.edu